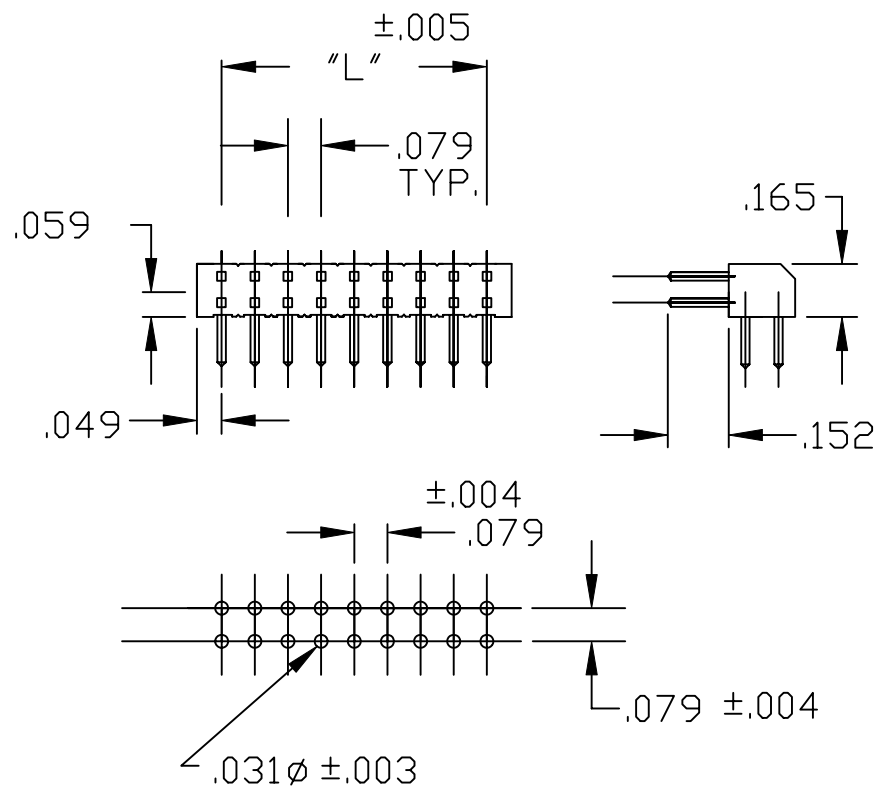
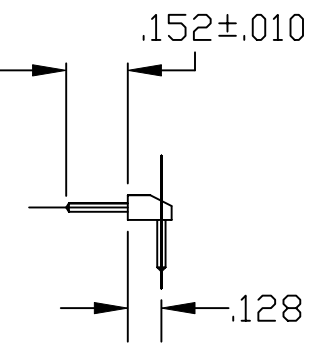
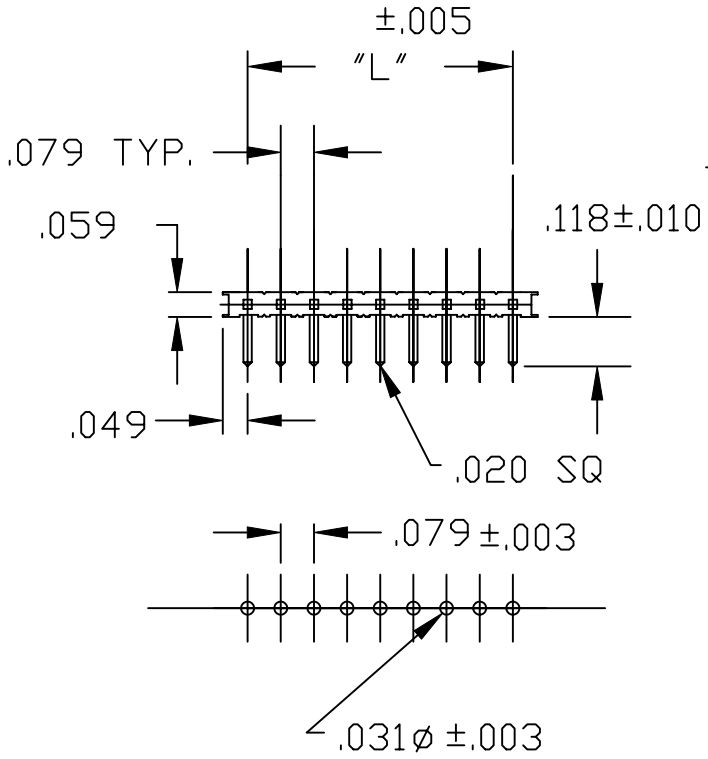


DESCRIPTION: 2mm HEADER STRIP STRAIGHT

"L" = NO. OF PINS/ROW X .079 - .079



216X-XX-02RXX

SERIES \_\_\_\_\_  
 2163 = SINGLE ROW  
 2164 = DUAL ROW

POSITIONS \_\_\_\_\_  
 SINGLE - INCRMENTS OF 1  
 DUAL = INCREMENTS OF 2

TYPE \_\_\_\_\_  
 02 = RIGHT ANGLE

PLATING \_\_\_\_\_  
 P2 = 15u" GOLD MATING AREA  
 100u" MATTE TIN ON TAILS

MATERIALS:  
 HOUSING: GLASS FILLED THERMOPLASTIC UL 94V-0  
 COLOR: BLACK  
 CONTACTS: DRAWN PHOSPHOR BRONZE 3./ HARD  
 RoHS COMPLIANT

	THESE DRAWINGS AND SPECIFICATIONS ARE THE PROPERTY OF NorComp AND SHALL NOT BE REPRODUCED, COPIED OR USED AS THE BASIS FOR THE MANUFACTURE OF SALE OF APPARATUS WITHOUT WRITTEN PERMISSION.		DRAWN: PAM JENKINS	DATE: 7-29-05
	<h1>NorComp</h1>		CHECKED:	DATE:
SCALE:			SHEET 1 OF 1	REV 1
DWG NO.			216X-XX-02RPX	